

Marine Insurance Day Seminar – October 6, 2017

MARINE INSURANCE & RECENT HURRICANES

Tiina Ruhlandt Medel
President
EIMC LLC

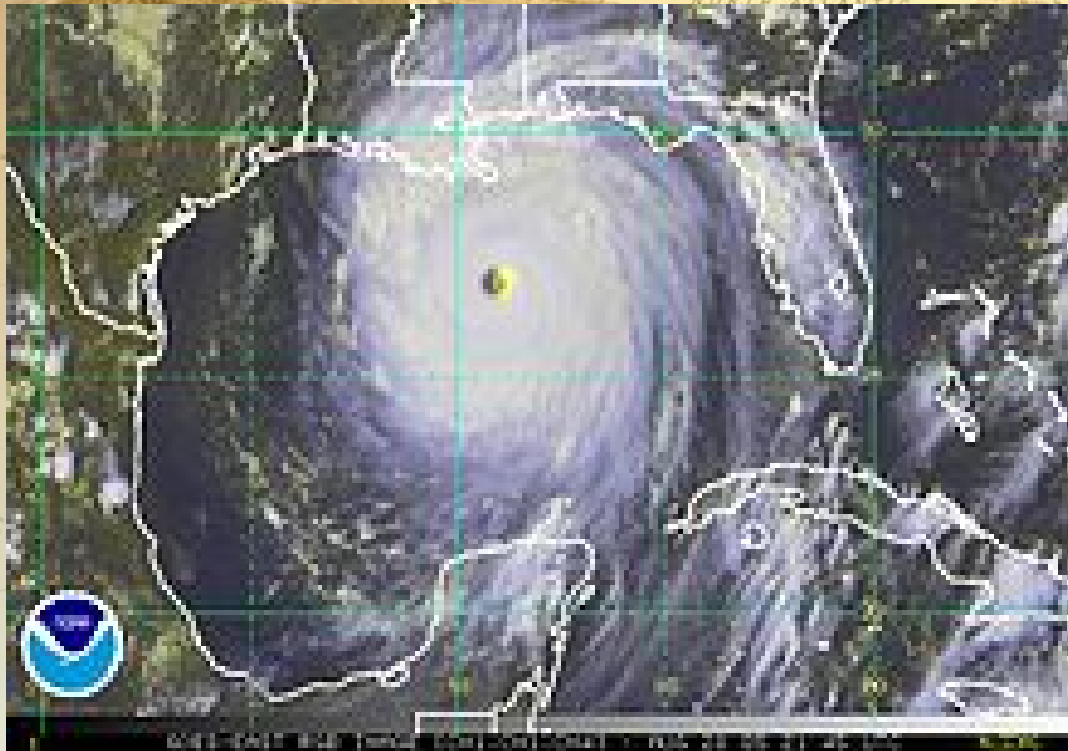




OVERVIEW

- Expectations, preparation, response, lessons learned
 - View from inside EIMC
 - Bigger picture view
- Goal: Spark new ideas

HURRICANE KATRINA – AUGUST 2005



SUPERSTORM SANDY – OCTOBER 2012



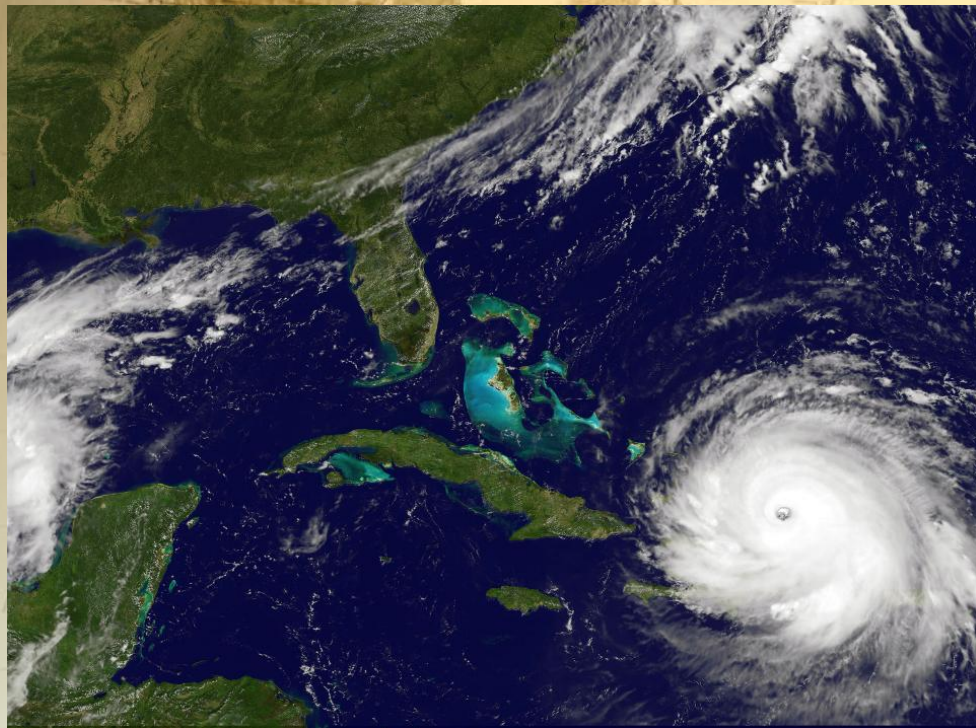
HURRICANE HARVEY – AUGUST 2017



HURRICANE HARVEY – AUGUST 2017



HURRICANE IRMA – SEPTEMBER 2017



HURRICANE MARIA – SEPTEMBER 2017



Data: National Hurricane Center, NOAA. Updated: Sep 21, 2017, 2:00 pm

PREPARATION & RESPONSE AT EIMC



KEEP
CALM
AND
TRIAGE



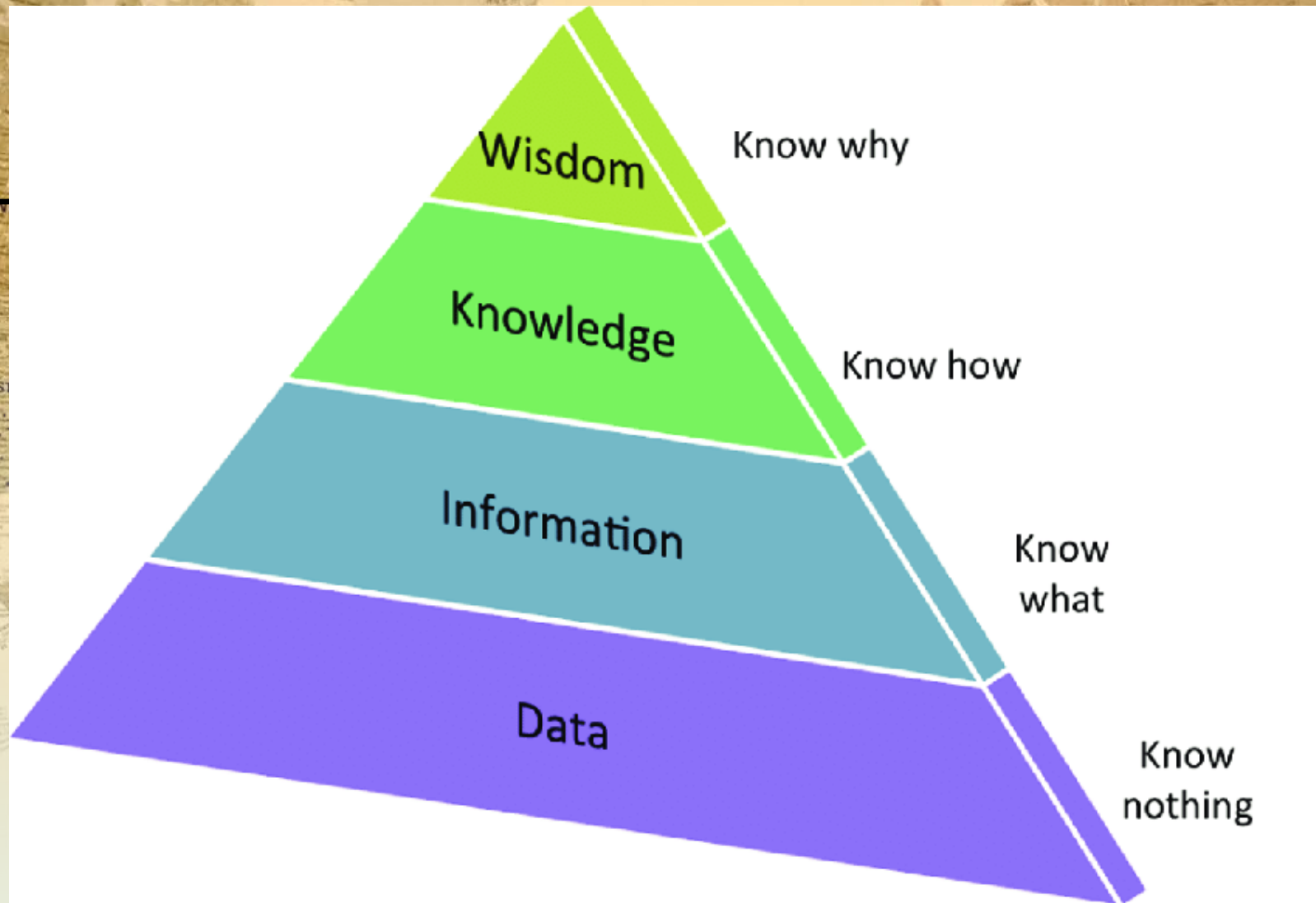
RECOMMENDED GEAR

ITEM	QUANTITY	Drive in	Flying Only
BRIMMED VENTED HARDHAT-WHITE	1		X
SWEAT BANDS	ONE PACK	X-mult	X
SAFETY GLASSES	2 PR.		X
FIRST AID KIT	1	X-mult	
HIBICLENS	1 BOTTLE	X-mult	X
"SWEAT TOWELS"	12	X-mult	
WORK GLOVES WITH GAUNTLETS	2 PR.	extras	X
MESH BACK SURVEYORS SAFETY VEST	1	extras	X
300+LUMEN HEAD LAMP-W/HARDHAT BAND	1	extras	X
HI-OUTPUT POCKET LIGHT	3		X
AAA BATTERIES	48 MIN.	x-mult	X
AA BATTERIES	48 MIN.	x-mult	X
D/9VOLT	AS NEEDED	some	
SEALED FLASH DRIVES	3 @ 16 GB	x-mult	X
SD CARDS FOR CAMERA	2		X
CAMERA SPECIFIC BATTERIES	4		X
SOLAR CHARGER-HIGH OUTPUT	1		?
REDUNDANT POWER CORDS	1 PER DEVICE		X
REPORTER NOTEBOOKS	36	x-mult	some
PENS	24	x-mult	X
LUMBER CHALK	CASE	x-mult	
CHALK HOLDER	1	x-mult	
LUMBER CRAYON-BLACK, RED, YELLOW	1	?	
HIGH QUALITY "Gorilla" Duct tape	1 roll	x-mult?	
SHIPPING TAPE FOR RESEALING	12 rolls with holder	x-mult?	
SILVER NITRATE	500 ml	X	2 oz bottle
SILVER NITRATE BOTTLES	Min-6	x-mult	
SAMPLE BAGS	ONE CASE EACH QT AND GALLON	x-mult	
GENERIC C-TAPT SEALS	ONE CASE	x-mult	if avail
BOLT CUTTERS 36'	2 PAIR	2 for each	attende
ALUMINIZED TAPE	6 ROLLS FOR CONTAINER REPAIR	?	
WATER BOTTLE WITH FILTER	MIN ONE	extras	X
"MACE"-CS GAS	BELT SIZE-ANIMAL CONTROL X 2	extra	X
WASP SPRAY	MIN 3 CANS	extra	X
PERSONAL HIGH STRENGTH BUG REPELENT	3 TUBES MIN 30%		X
SWEAT-PROOF SUNSCREEN	4 CANS/TUBES		X
TOILET PAPER	6 ROLLS FOR CONTAINER REPAIR	extra	??Ctr rep?
EQUIPMENT CLEANER "WINDEX"	1	extra	
EXAM GLOVES	2 BOXES MINIMUM		
HAND WIPES	2 BOXES MINIMUM	extra	some
LYSOL TYPE SPRAY FOR BOOTS, HOTEL, ETC.		extras	?
"GORILLA" BRAND HEAVY DUTY DUCT TAPE	1 ROLL	extra	
ALUMINIZED ASPHALTIC TAPE	2 ROLLS FOR CONTAINER PATCHI	??	
PRY BAR	1	X	
36" CHEATER PIPE	1 (FOR STUBBORN CONTAINER LC	X	
EXTRA BOOT LACES	2 PAIR		X
MUD BOOTS (STEEL TOE)	1 PAIR		X

The background of the slide is a world map with a vintage, sepia-toned aesthetic. The map shows major landmasses and oceans, with labels for continents like North America, Europe, Africa, Asia, and Australia, as well as oceans like the North Atlantic, Pacific, and South Atlantic. At the bottom of the slide, there is a horizontal band showing a wooden floor with vertical planks.

LESSONS LEARNED AT EIMC

- Build a good team
- Contingency plan
- Relationships
- Be nimble, flexible & adapt to facts on the ground
- Get information out to stakeholders



Compiled based on Ackoff, R. L. (1989). From data to wisdom. *Journal of Applied Systems Analysis*, 16(1), 3-9. and Zeleny, M. (1987). Management support systems: towards integrated knowledge management. *Human Systems Management*, 7(1), 59-70.

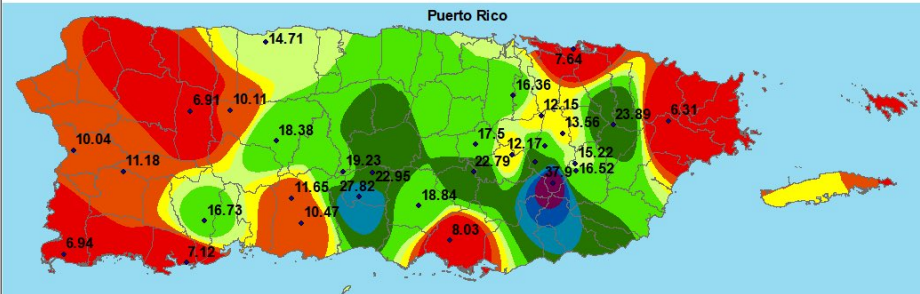


Hurricane María Estimated Rainfall

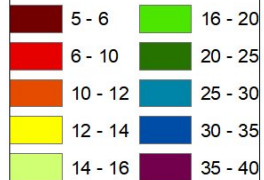
National Weather Service WFO San Juan

Data Source: USGS

Data is Preliminary



Rainfall (inches)



0 5 10 20

Percentage of cell sites out of service in Puerto Rico

By county

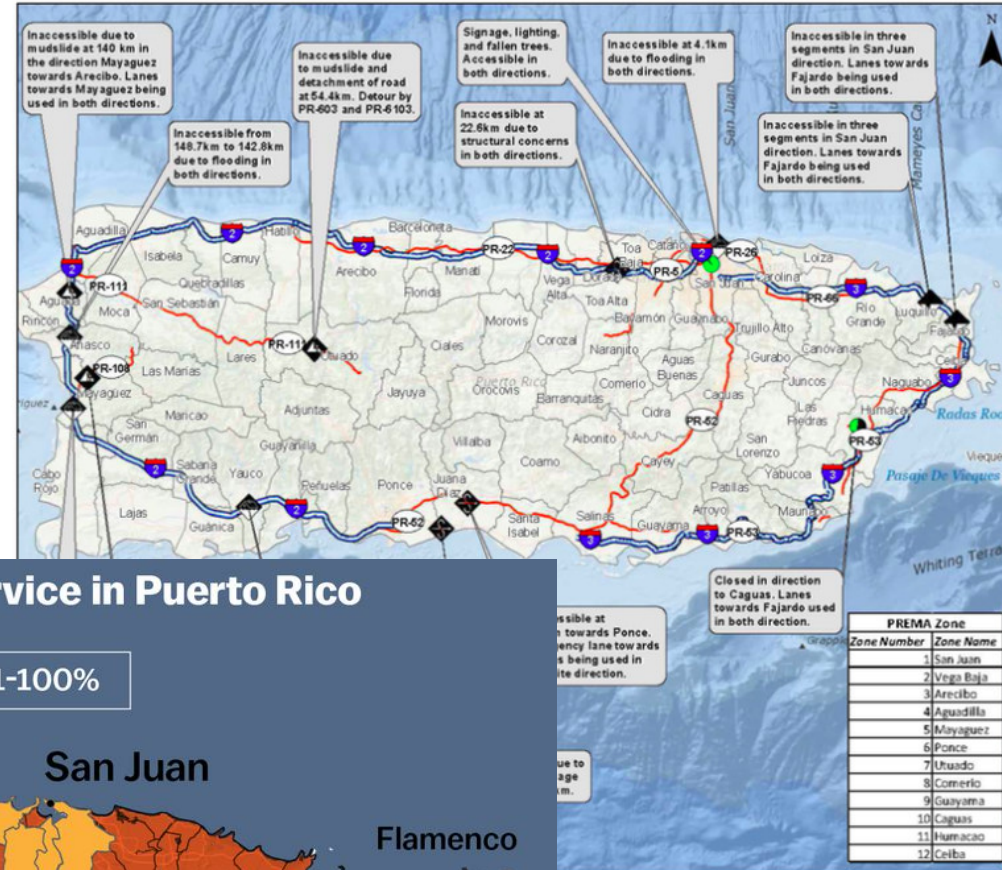
61-80%

81-100%



SOURCES: FCC, Mapbox

Puerto Rico Road Status as of September 28, 2017



Puerto Rico Road Status

As of September 26, 2017

Road Type

Eisenhower Interstate System

Puerto Rico Highway

Highway Status

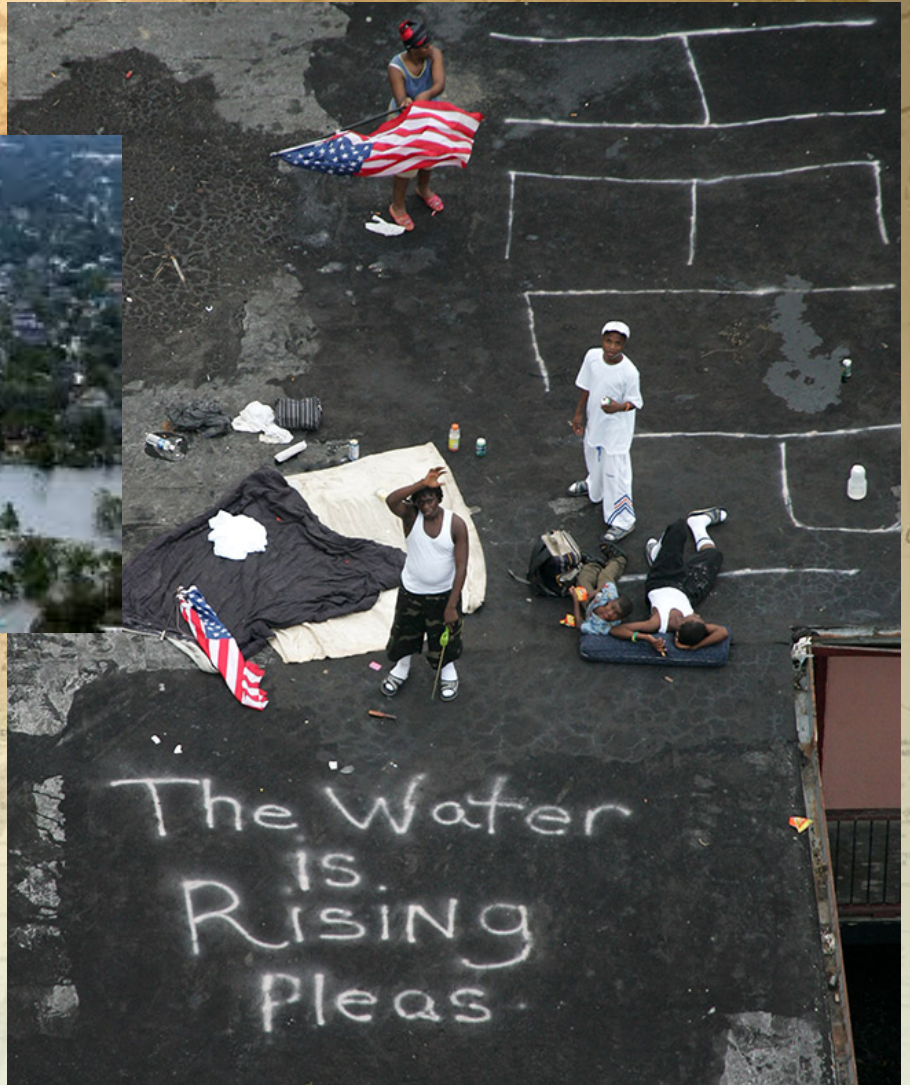
- Accessible
- Partial Accessible (1 Lane, both direction)
- Inaccessible (Debris)
- Inaccessible (Flooded)
- Inaccessible (Mudslide)
- Inaccessible (Structural Damage)

0 8 16 24 Miles



Vox

IMPORTANT, MORE, MOST...

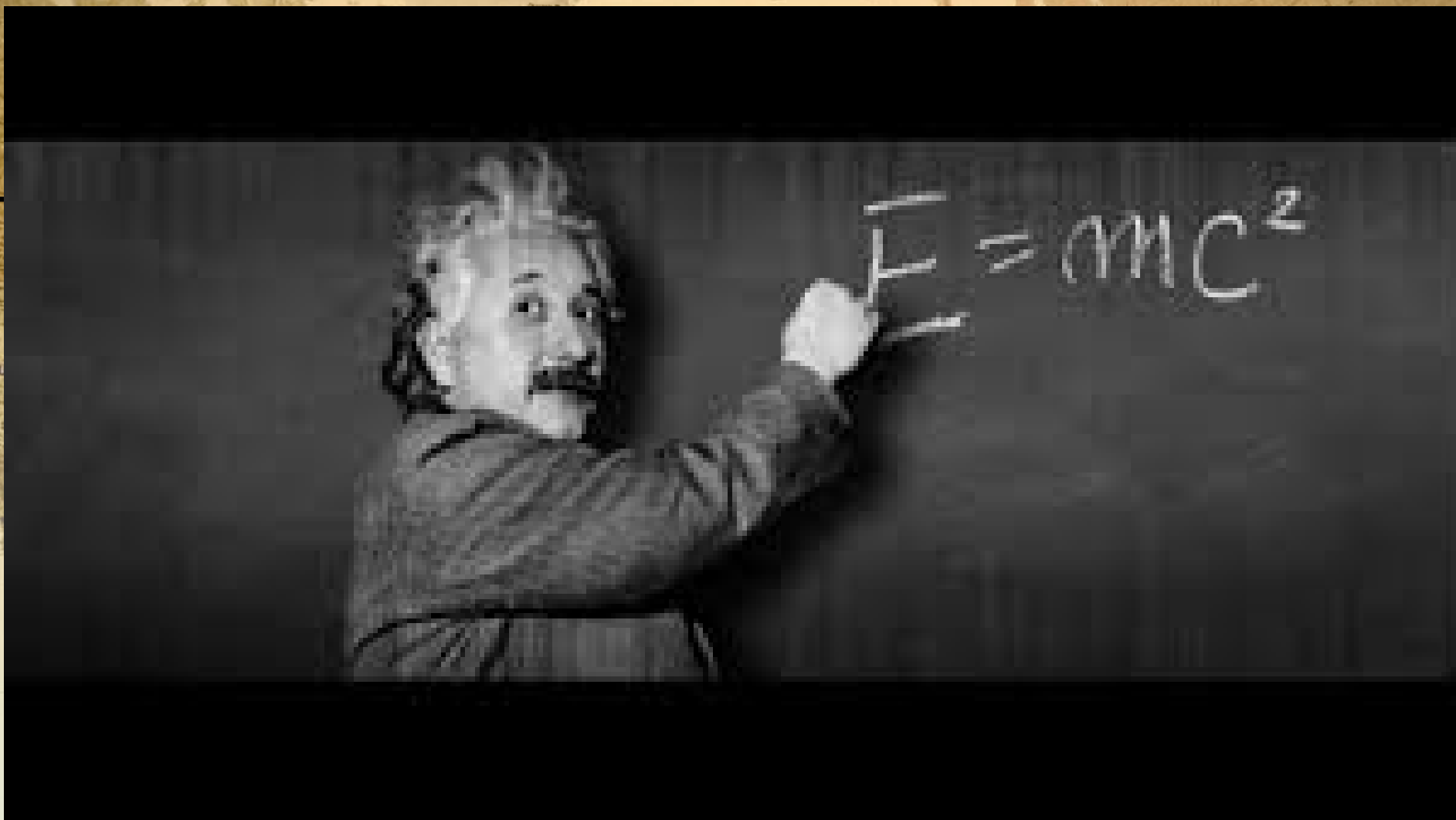




#1 EIMC CORE VALUE:

- ***Do what's best for the client***

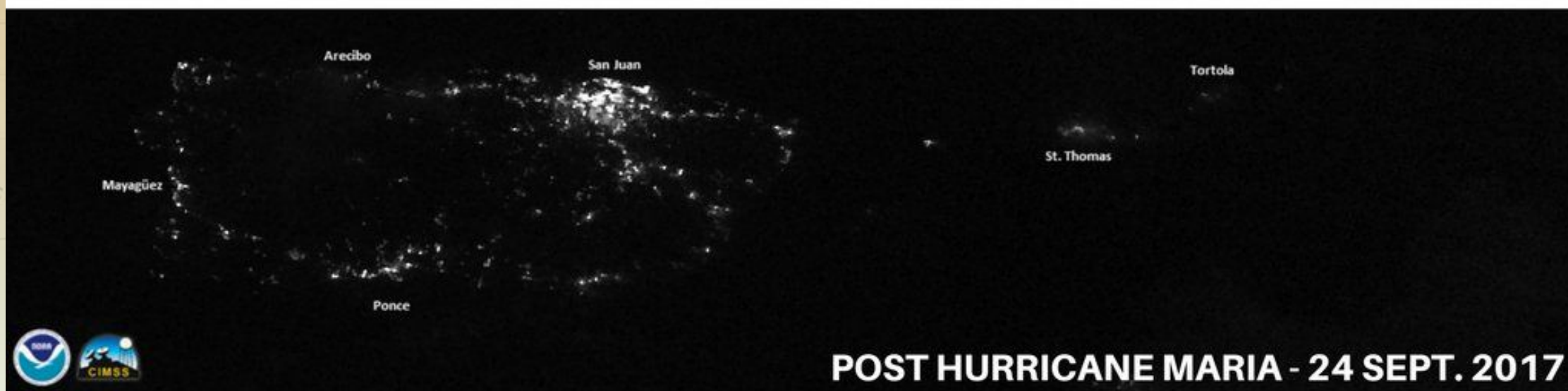
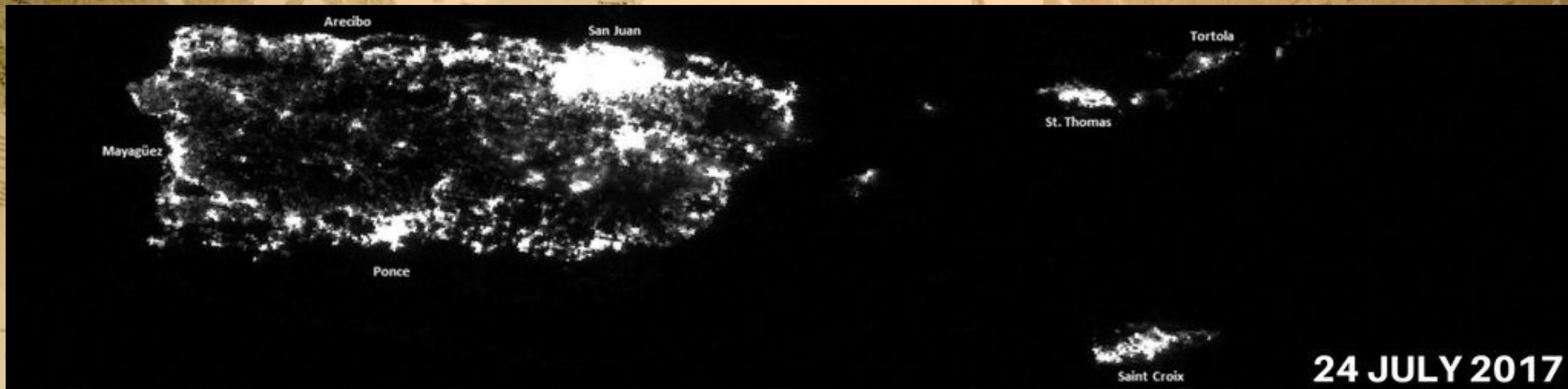
Consider the long-term relationship rather than the short-term gain. Put yourself in the client's position. Remember that at the other end of the business relationship is another human being. Caution: Do not compromise on ethics.



OPTIONS

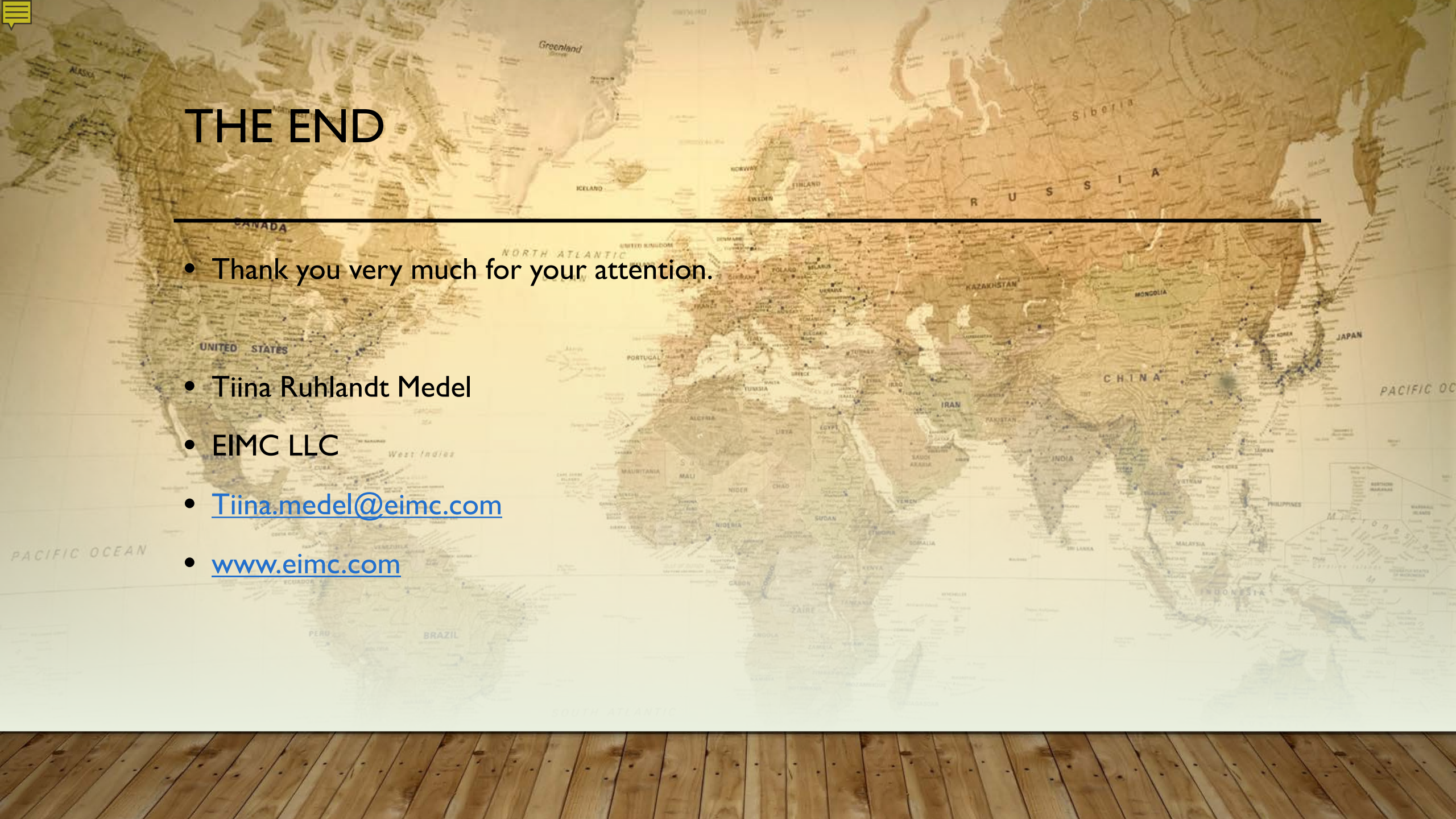
- Mitigate
- Adapt
- Or





WHAT'S NEXT?



A world map with a wooden floor at the bottom. The map is a detailed, vintage-style world map showing continents, countries, and major cities. The colors are muted, with greens for land and blues for water. The wooden floor at the bottom is made of dark brown planks. The text "THE END" is written in large, bold, black capital letters across the top of the map.

THE END

-
- Thank you very much for your attention.

- Tiina Ruhlandt Medel
- EIMC LLC
- Tiina.medel@eimc.com
- www.eimc.com